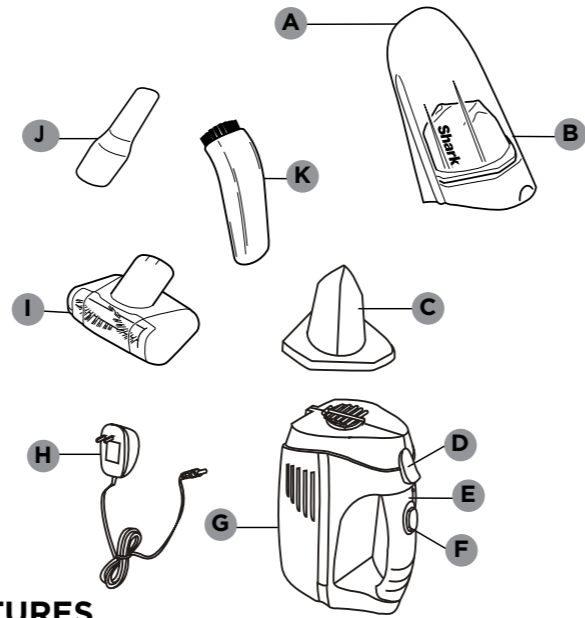


**LV900
LV901
Series**



FEATURES

- A Air-Intake Nozzle**
- B Dust Cup Container**
- C Dust Cup Filter**
- D Dust Cup Release Button**
- E Charging Indicator Light**
- F On/Off Switch**
- G Motor Housing**
- H Charging Adapter**
- I Motorized Brush**
- J Crevice Tool**
- K Dusting Brush***

*Accessories vary by model

TECHNICAL SPECIFICATIONS: 14.4 Volt MAX** Lithium-ion battery

** The Lithium-ion battery, like all Lithium-ion products, will naturally decrease in capacity over time from the 100% capacity of a new battery.

IMPORTANT: To register your Shark® Cordless Hand Vacuum, visit registryourshark.com.

**IMPORTANT SAFETY INSTRUCTIONS
FOR HOUSEHOLD USE ONLY**

READ CAREFULLY BEFORE USE

⚠ WARNING: To reduce the risk of injury, fire, electric shock, and property damage resulting from improper use of the appliance, carefully observe and follow these instructions. Use only as described in this manual.

THE LV900/LV901 HANDHELD VACUUM, CHARGER, AND MOTORIZED NOZZLE CONTAIN ELECTRICAL CONNECTIONS AND MOVING PARTS THAT POTENTIALLY PRESENT A RISK TO THE USER.

1. To avoid fire, explosion, or injury, inspect handheld vacuum and charger. **DO NOT** use a damaged vacuum cleaner or charger.
2. If vacuum cleaner is not working as it should, or has been dropped, damaged, left outdoors, or immersed in water, return it to SharkNinja Operating LLC for examination, repair, or adjustment.
3. **DO NOT** immerse in water or any other liquids.
4. **DO NOT** handle charger or vacuum cleaner with wet hands.
5. **DO NOT** leave vacuum cleaner unattended.
6. **DO NOT** use outdoors or on wet surfaces. Use only on dry surfaces.
7. Keep vacuum away from heated surfaces.
8. Use only the provided charger. **DO NOT** incinerate appliance, even if it is severely damaged, as the battery may explode in a fire.
9. **DO NOT** abuse the charger cord, pull cord around sharp edges or corners, or use charger with an extension cord. Plug charger directly into an electrical outlet. Use charger only in a standard electrical outlet.
10. **DO NOT** carry the charger by the cord or yank to disconnect from an outlet; instead grasp the plug and pull to disconnect. Keep charger cord away from heated surfaces.

GENERAL USE

11. To avoid unintentional starting, always turn off the vacuum cleaner before picking it up or carrying it, and before attaching or detaching the charger, dust cup, filter, or any accessories.
12. Assemble vacuum completely before use. **DO NOT** use without dust cup and all filters in place.
13. Use only Shark brand filters and accessories. Using other brands' parts will void warranty.
14. **DO NOT** charge the vacuum at temperatures below 50°F (10°C) or above 104°F (40°C). Charging improperly or at temperatures outside of the specified range may damage the battery and increase the risk of fire.
15. Ensure the appliance is at room temperature before operating.
16. Before turning on the vacuum, make sure that all filters are thoroughly dry after routine cleaning.
17. **DO NOT** allow young children to operate the appliance or use as a toy. Close supervision is necessary when any appliance is used near children.
18. Keep your work area well lit.
19. Use extra care when cleaning on stairs.
20. Keep all openings away from hair, face, fingers uncovered feet, or loose clothing.

21. **DO NOT** vacuum up any liquids.
22. **DO NOT** put any objects into openings. **DO NOT** use with any opening blocked; keep free of dust, lint, hair, and anything that may reduce airflow.
23. **DO NOT** use if airflow is restricted; if the air paths or the nozzle become blocked, turn off the vacuum cleaner. Clear all obstructions before powering on again.
24. **DO NOT** vacuum up hard or sharp objects such as glass, nails, screws, or coins that could damage the vacuum cleaner.
25. **DO NOT** vacuum up drywall dust, fireplace ash, or embers.
26. **DO NOT** use as an attachment to power tools for dust collection.
27. **DO NOT** vacuum up smoking or burning objects such as hot coals, cigarette butts, or matches.
28. **DO NOT** vacuum up flammable or combustible materials (e.g., lighter fluid, gasoline, or kerosene) or use vacuum in areas where they may be present.
29. **DO NOT** vacuum up toxic solutions (e.g., chlorine bleach, ammonia, or drain cleaner).
30. **DO NOT** use in an enclosed space where vapors are present from paint, paint thinner, moth-proofing substances, flammable dust, or other explosive or toxic materials.

LITHIUM-ION BATTERY

31. The Lithium-ion battery is the power source for the appliance. **DO NOT** carry the appliance with your finger on the power button. **DO NOT** charge appliance with the power on.
32. Use only provided Shark chargers ZD12D190070US or YLJXA-T176070. Use of incorrect charger may create a risk of fire when used with the Lithium-ion battery.
33. Under abusive conditions, liquid may be ejected from the Lithium-ion battery. Avoid contact with liquid, as it may cause irritation or burns. If contact occurs, flush with water. If liquid contacts eyes, seek medical help.
34. Follow all charging instructions and **DO NOT** charge the vacuum outside of the temperature range specified in the instructions (see #14). Charging improperly or at temperatures outside of the specified range may damage the battery and increase the risk of fire.

STORAGE AND MAINTENANCE

35. Store the appliance indoors. **DO NOT** use or store it below 37.4°F (3°C). or above 104°F (40°C) to maintain long-term battery life.
36. **DO NOT** expose appliance to fire or temperature above 266°F (130°C) as it may cause explosion.
37. There are **NO** serviceable parts. To ensure safety, **DO NOT** modify or attempt to repair the appliance, except as detailed in this document.

KEEP THESE INSTRUCTIONS

ASSEMBLING THE HAND VACUUM

- IMPORTANT:** The dust cup filter must always be used when operating the hand vacuum.
- 1 Push the dust cup release button and remove the dust cup.
 - 2 Verify that the dust cup filter is inside, then reattach the dust cup to the hand vacuum.
 - 3 The motorized brush can be used to vacuum short pile carpets or rugs. To attach the motorized brush, make sure the On/Off switch is in the Off position. Then firmly insert the motorized brush into the air-intake nozzle, ensuring that the contact pins are engaged in the connector slots of the unit.
▲ WARNING: Do not touch the motorized brush while it is in motion.
 - 4 The crevice tool can be used to clean narrow, hard-to-reach places. To attach the crevice tool, insert the attachment into the air-intake nozzle.

CHARGING YOUR HAND VACUUM

- 1 Connect the charging adapter to the port on the back of the vacuum.
- 2 Plug the charger into a wall outlet. The charging indicator light will illuminate when the vacuum is being charged.

NOTE: Lithium-ion battery takes approximately 6 hours to charge completely.

MAXIMIZING THE LIFE OF YOUR LITHIUM-ION BATTERY

Your Lithium-ion battery does not come fully charged. Prior to first use, charge completely. During first use, discharge fully to condition your Lithium-ion battery. Failure to do so may cause LED indications to work incorrectly.

USING THE CORDLESS VACUUM

CAUTION: The air-intake nozzle and attachments must be free of obstructions at all times, or the motor will overheat and could become damaged.

- 1 To start the vacuum, slide the On/Off switch to the On position.
- 2 To turn off the power, slide the switch to the Off position.

CHANGING & CLEANING THE DUST CUP FILTER

NOTE: It is recommended that the dust cup filter be replaced every 6 to 9 months to ensure peak performance.

- 1 Press the dust cup release button and pull out the dust cup.
- 2 Carefully remove the dust cup filter and empty the dust cup.
- 3 Hand-rinse the filter in cold water and let it air-dry completely before reinstalling. **Air-dry only. DO NOT** use a hair dryer or clothes dryer.

BATTERY REMOVAL AND DISPOSAL

This product uses a Lithium-ion rechargeable and recyclable battery. When the battery no longer holds a charge, it should be removed from the hand vacuum and recycled. The battery must not be incinerated or composted.

When your Lithium-ion battery needs to be replaced, dispose of it or recycle it in accordance with local ordinances or regulations. In some areas, it is illegal to place spent Lithium-ion batteries in the trash or in a municipal solid waste stream. Return spent battery to an authorized recycling center or to retailer for recycling. Contact your local recycling center for information on where to drop off the spent battery.

For more information on battery removal for disposal, please visit sharkclean.com/batterysupport.

TROUBLESHOOTING

The hand vacuum will not operate	Battery needs to be recharged.
	Battery is damaged and needs to be replaced.
	Try using a different electrical outlet to charge.
Motorized brush will not work	The metal contact pins on the motorized brush are not in contact with the connector slots on the vacuum. Remove the motorized brush and reinsert firmly into the air-intake nozzle.
	The motorized brush is blocked. Carefully remove all the lint, hair, or other debris from the motorized brush.
Hand vacuum will not pick up or suction is weak	Dust cup is full. Empty the dust cup.
	Dust cup filter needs cleaning or replacement. Clean or replace the dust cup filter.
	Vacuum needs to be recharged.
Dust is escaping from the hand vacuum	Empty the dust cup container.
	The dust cup filter is not installed correctly. Remove it and reinsert it. The dust cup filter has a hole or a puncture and needs to be replaced.

PARTS

To order additional parts for your Shark® CORDLESS HAND VACUUM models LV900, LV901 go to sharkaccessories.com or call 1-800-798-7398.

PART	PART NO
Dust Cup Filter	XF900
Charging Adapter	XA900

TWO-YEAR LIMITED WARRANTY

The 2-Year Limited Warranty applies to purchases made from authorized retailers of SharkNinja Operating LLC. Warranty coverage applies to the original owner and to the original product only and is not transferable.

SharkNinja warrants that the unit shall be free from defects in material and workmanship for a period of 2 years from the date of purchase when it is used under normal household conditions and maintained according to the requirements outlined in this instruction manual, subject to the following conditions and exclusions.

What is covered in my warranty?

- 1 The original unit and/or non-wearable components deemed defective, in SharkNinja's sole discretion, will be repaired or replaced for up to 2 years from the original purchase date.
- 2 In the rare event that a replacement unit is issued, the warranty coverage ends six months following the receipt date of the replacement unit or the remainder of the existing warranty, whichever is greater. If the unit is replaced, SharkNinja reserves the right to replace the unit with one of equal or greater value.

What is not covered in my warranty?

Our Customer Service/Product Specialists are available to provide all the warranty service options available to you, including the possibility of upgrading to our VIP Warranty Service Options for select product categories.

- 1 Normal wear and tear of wearable parts which require regular maintenance and/or replacement to ensure the proper functioning of your unit are not covered by this warranty.
- 2 Any unit that has been tampered with or used for commercial purposes.
- 3 SharkNinja will cover the cost for the customer to send in the unit to us for repair or replacement. A fee of \$19.95 for return shipping costs will be charged at the time of return shipment of the repaired or replacement unit.
- 4 Damage caused by misuse, abuse, or negligent handling, or damage due to mishandling in transit.
- 5 Consequential and incidental damages.
- 6 Defects caused by or resulting from damages from shipping or from repairs, service or alteration to the product or any of its parts which have been performed by a repair person not authorized by SharkNinja.
- 7 Products purchased, used or operated outside of North America.

Problems with your unit/How to get service:

If your appliance fails to operate properly while in use under normal household conditions within the warranty period, visit sharkclean.com for product care/maintenance self-help.

Our Customer Service and product specialists are also available at 1-800-798-7398 to assist with product support and warranty service options.

How to initiate a warranty claim:

You can call **1-800-798-7398** to have a Customer Service specialist assist you. Please note you must call **1-800-798-7398** to initiate a warranty claim. Return and packing instruction information will be provided at that time.

For Customer Service hours, visit sharkclean.com

Replacement parts are available for purchase at sharkclean.com. For more information on which parts are classified as wearable or non-wearable, please visit sharkclean.com/warranty. This warranty gives you specific legal rights, and you also may have other rights that vary from state to state.

Some states do not permit the exclusion or limitation of incidental or consequential damages, so the above may not apply to you.



The RBRC™ (Rechargeable Battery Recycling Corporation) seal on the Lithium-ion battery indicates that the costs to recycle the battery at the end of its useful life have already been paid by SharkNinja. In some areas, it is illegal to place spent Lithium-ion batteries in the trash or municipal solid waste stream and the RBRC program provides an environmentally conscious alternative.

RBRC, in cooperation with SharkNinja and other battery users, has established programs in the United States and Canada to facilitate the collection of spent Lithium-ion batteries. Help protect our environment and conserve natural resources by returning the spent Lithium-ion battery to an authorized SharkNinja service center or to your local retailer for recycling. You may also contact your local recycling center for information on where to drop off the spent battery, or call 1-800-798-7398.

Copyright © SharkNinja Operating LLC 2018
Needham, MA 02494/Ville St. Laurent, Québec H4S 1A7
1-800-798-7398
sharkclean.com

SHARK is a registered trademark of SharkNinja Operating LLC.
For Shark | Ninja U.S. Patent information visit <http://www.sharkninja.com/USPatents>
Printed in China

Illustrations may differ from actual product.